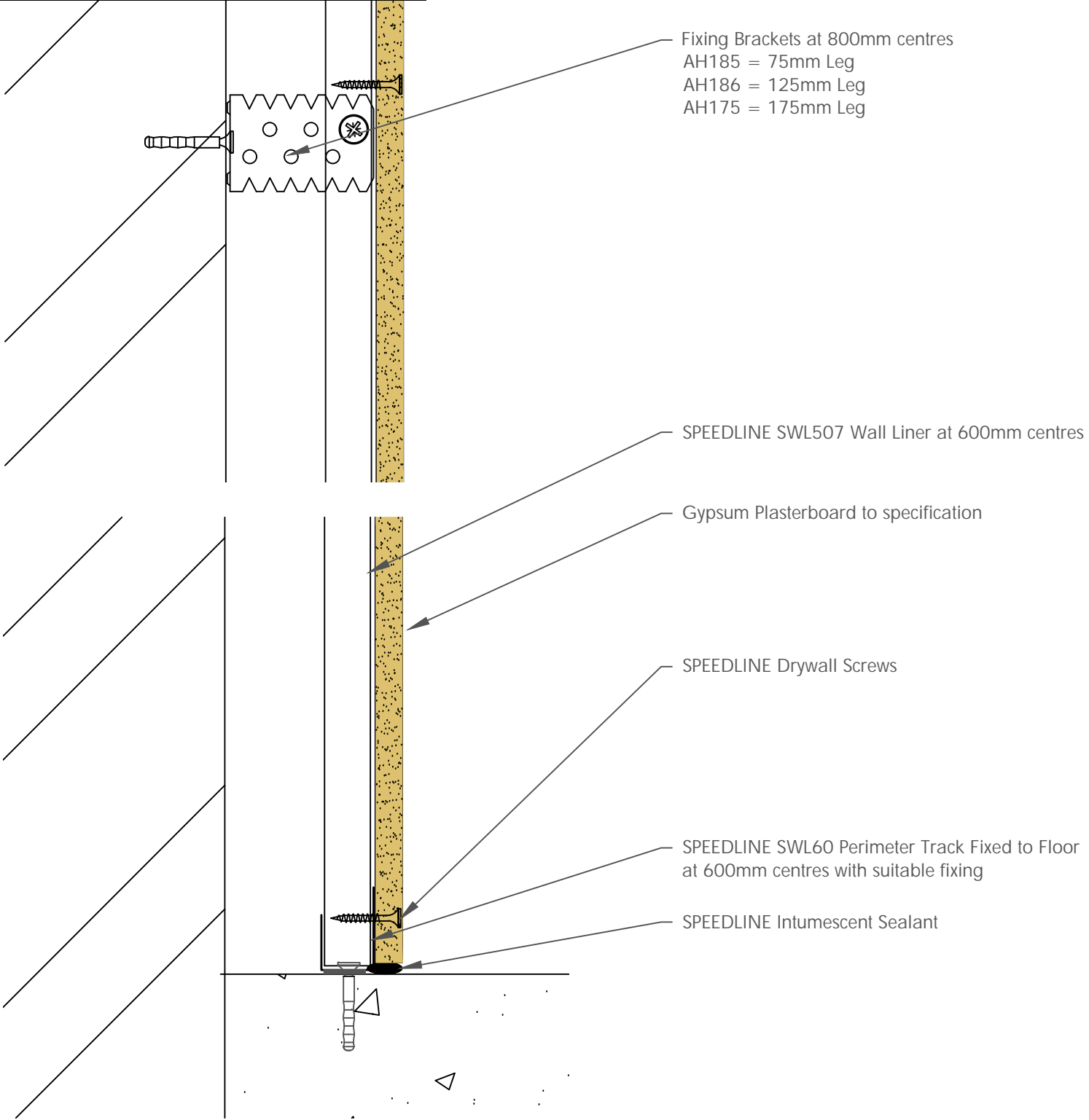


Board Thickness	Speedline Drywall Fixing Length
12.5mm & 15mm	25mm
12.5mm + 12.5mm	25mm + 38mm
12.5mm + 15mm	25mm + 42mm
15mm + 15mm	25mm + 42mm



CDR No: 98      SCALE: NTS      DATE: 01/05/18      Details to be read in conjunction with project specification guidelines

SINGLE BOARD WALL LINER - BASE

All performance data and system specifications are for systems constructed with materials & components as shown. The inclusion or substitution of any other manufacturers materials or components could invalidate test data and system performance and permission must be given in writing by SIG PLC.

The information is provided in good faith and is based upon details received which are assumed to include all relevant facts.

We accept no liability for its accuracy, adequacy or completeness. Recipients must satisfy themselves as to its suitability as we do not accept responsibility for any claims or consequential loss. Acceptance of the content and subsequent design responsibility rests entirely with the recipients who should then produce accepted details on their own company documentation.

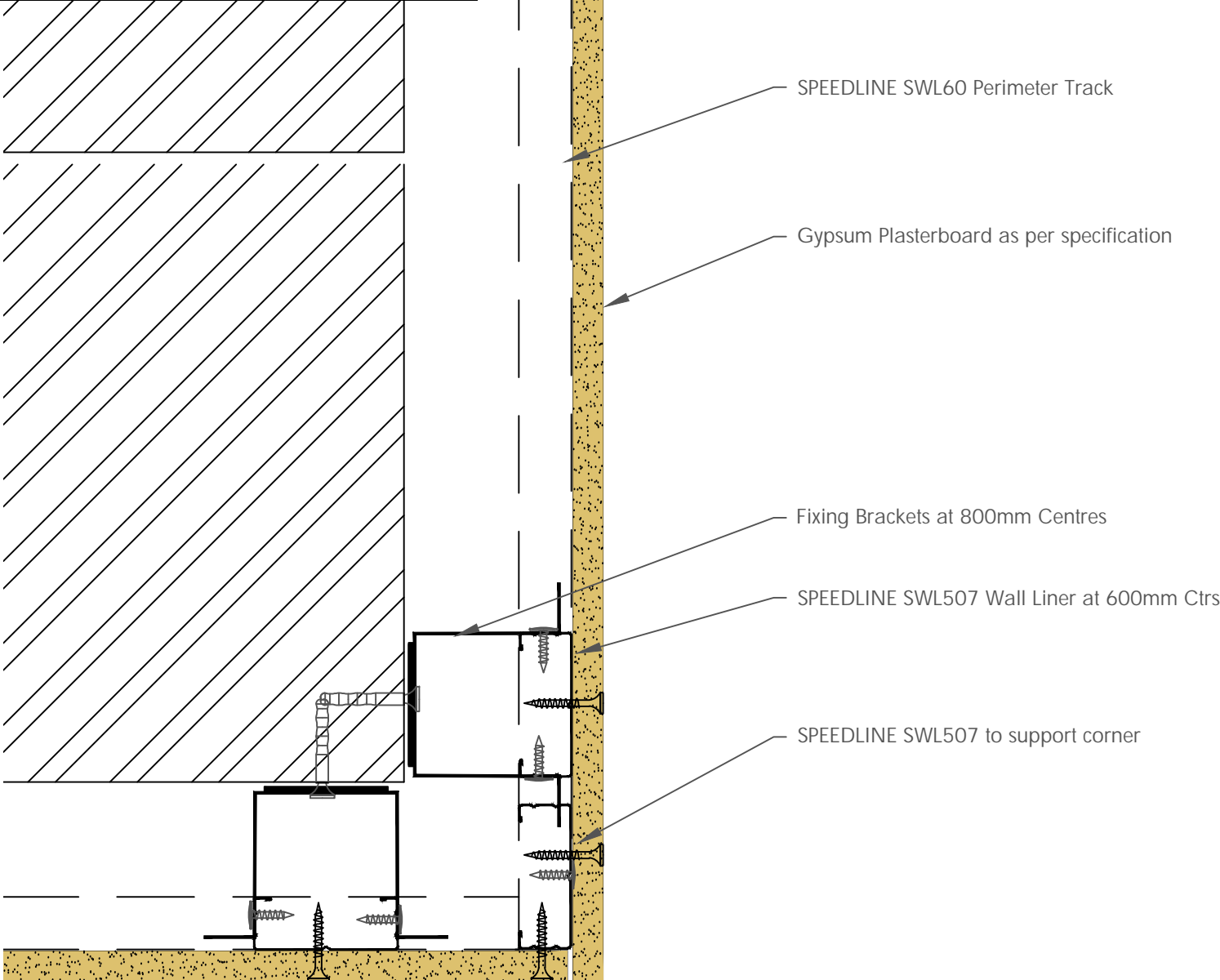
Adsetts House,  
16 Europa View,  
Sheffield Business Park,  
Sheffield,  
S9 1XH.

T: 0114 231 8030

E: enquiries@speedlinedrywall.co.uk



Board Thickness	Speedline Drywall Fixing Length
12.5mm & 15mm	25mm
12.5mm + 12.5mm	25mm + 38mm
12.5mm + 15mm	25mm + 42mm
15mm + 15mm	25mm + 42mm



SPEEDLINE SWL60 Perimeter Track

Gypsum Plasterboard as per specification

Fixing Brackets at 800mm Centres

SPEEDLINE SWL507 Wall Liner at 600mm Ctrs

SPEEDLINE SWL507 to support corner

CDR No: 99    SCALE: NTS    DATE: 01/05/18    Details to be read in conjunction with project specification guidelines

SWL507 WALL LINER - EXTERNAL CORNER

All performance data and system specifications are for systems constructed with materials & components as shown. The inclusion or substitution of any other manufacturers materials or components could invalidate test data and system performance and permission must be given in writing by SIG PLC.

The information is provided in good faith and is based upon details received which are assumed to include all relevant facts.

We accept no liability for its accuracy, adequacy or completeness. Recipients must satisfy themselves as to its suitability as we do not accept responsibility for any claims or consequential loss. Acceptance of the content and subsequent design responsibility rests entirely with the recipients who should then produce accepted details on their own company documentation.

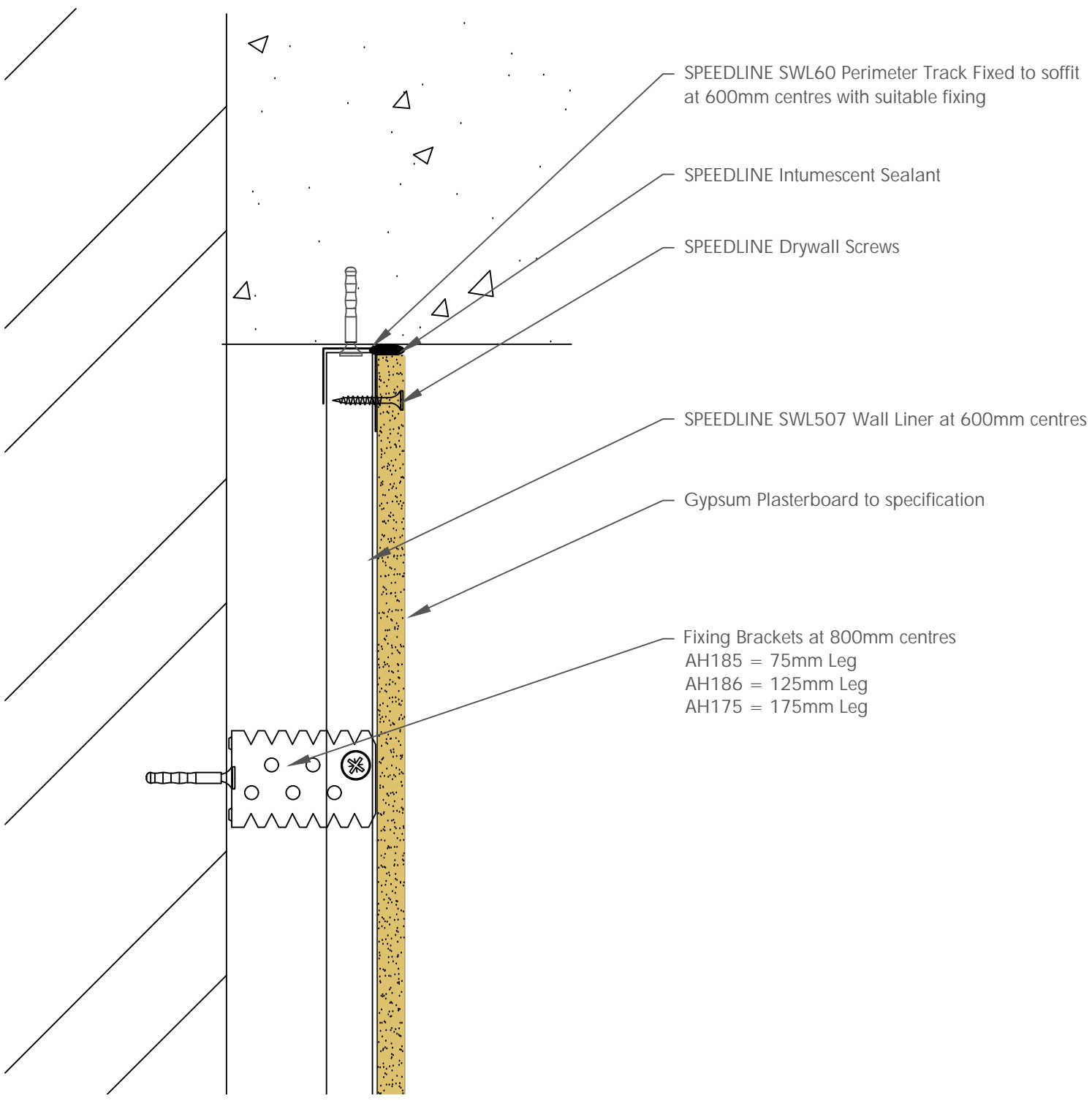
Adsetts House,  
16 Europa View,  
Sheffield Business Park,  
Sheffield,  
S9 1XH.

T: 0114 231 8030

E: enquiries@speedlinedrywall.co.uk



Board Thickness	Speedline Drywall Fixing Length
12.5mm & 15mm	25mm
12.5mm + 12.5mm	25mm + 38mm
12.5mm + 15mm	25mm + 42mm
15mm + 15mm	25mm + 42mm



SPEEDLINE SWL60 Perimeter Track Fixed to soffit at 600mm centres with suitable fixing

SPEEDLINE Intumescent Sealant

SPEEDLINE Drywall Screws

SPEEDLINE SWL507 Wall Liner at 600mm centres

Gypsum Plasterboard to specification

Fixing Brackets at 800mm centres  
 AH185 = 75mm Leg  
 AH186 = 125mm Leg  
 AH175 = 175mm Leg

CDR No: 404    SCALE: NTS    DATE: 01/05/18    Details to be read in conjunction with project specification guidelines

SINGLE BOARD WALL LINER - HEAD

All performance data and system specifications are for systems constructed with materials & components as shown. The inclusion or substitution of any other manufacturers materials or components could invalidate test data and system performance and permission must be given in writing by SIG PLC.

The information is provided in good faith and is based upon details received which are assumed to include all relevant facts.

We accept no liability for its accuracy, adequacy or completeness. Recipients must satisfy themselves as to its suitability as we do not accept responsibility for any claims or consequential loss. Acceptance of the content and subsequent design responsibility rests entirely with the recipients who should then produce accepted details on their own company documentation.

Adsetts House,  
 16 Europa View,  
 Sheffield Business Park,  
 Sheffield,  
 S9 1XH.

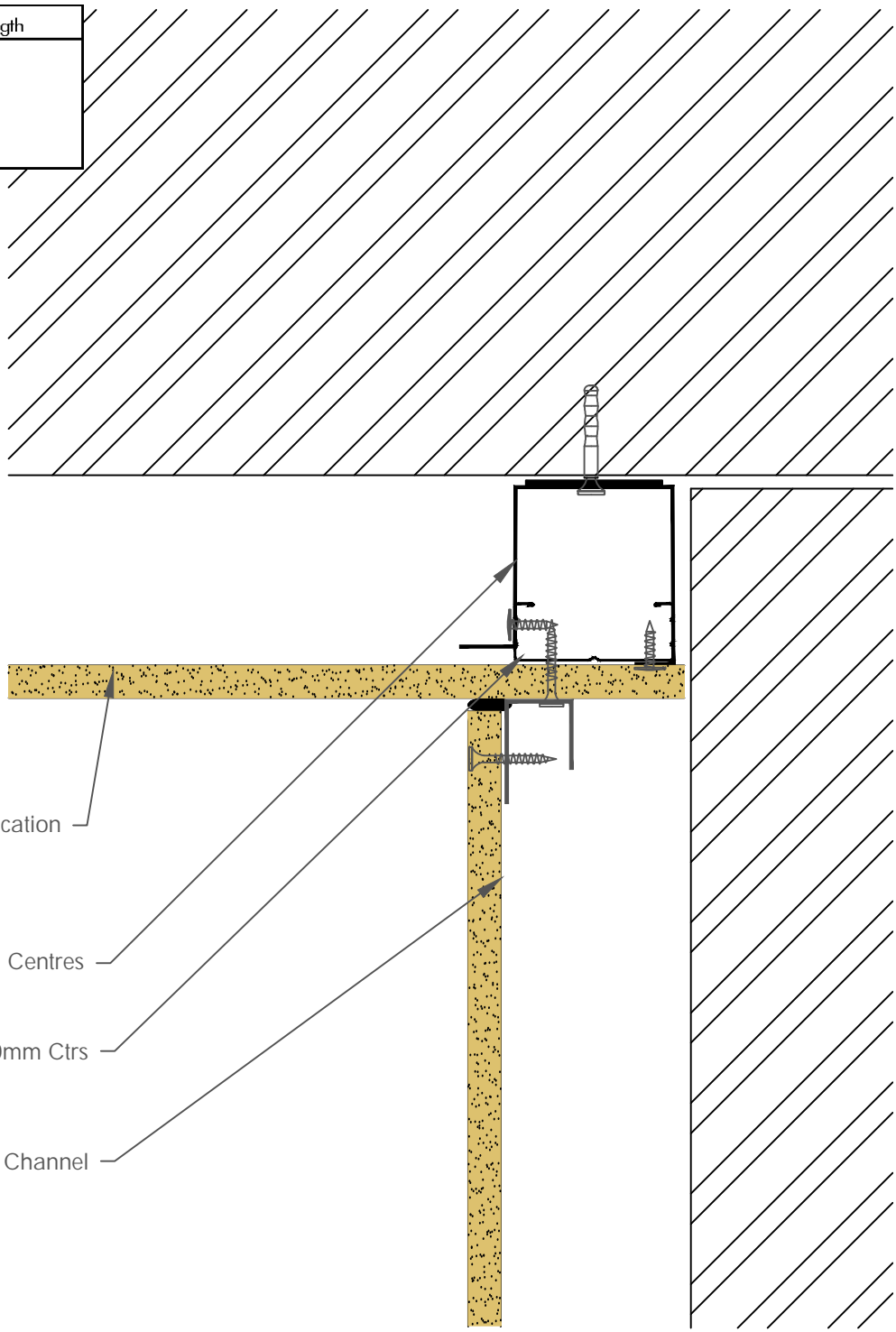
T: 0114 231 8030

E: enquiries@speedlinedrywall.co.uk



Part of sig plc

Board Thickness	Speedline Drywall Fixing Length
12.5mm & 15mm	25mm
12.5mm + 12.5mm	25mm + 38mm
12.5mm + 15mm	25mm + 42mm
15mm + 15mm	25mm + 42mm



Gypsum Plasterboard to Specification

Fixing Brackets at 800mm Centres

SPEEDLINE SWL507 Wall Liner at 600mm Ctrs

SPEEDLINE SWL60 Perimeter Channel

CDR No: SL 121	SCALE: NTS	DATE: 01/05/18	Details to be read in conjunction with project specification guidelines
----------------	------------	----------------	---

SWL507 WALL LINER - INTERNAL CORNER

All performance data and system specifications are for systems constructed with materials & components as shown. The inclusion or substitution of any other manufacturers materials or components could invalidate test data and system performance and permission must be given in writing by SIG PLC.

The information is provided in good faith and is based upon details received which are assumed to include all relevant facts.

We accept no liability for its accuracy, adequacy or completeness. Recipients must satisfy themselves as to its suitability as we do not accept responsibility for any claims or consequential loss. Acceptance of the content and subsequent design responsibility rests entirely with the recipients who should then produce accepted details on their own company documentation.

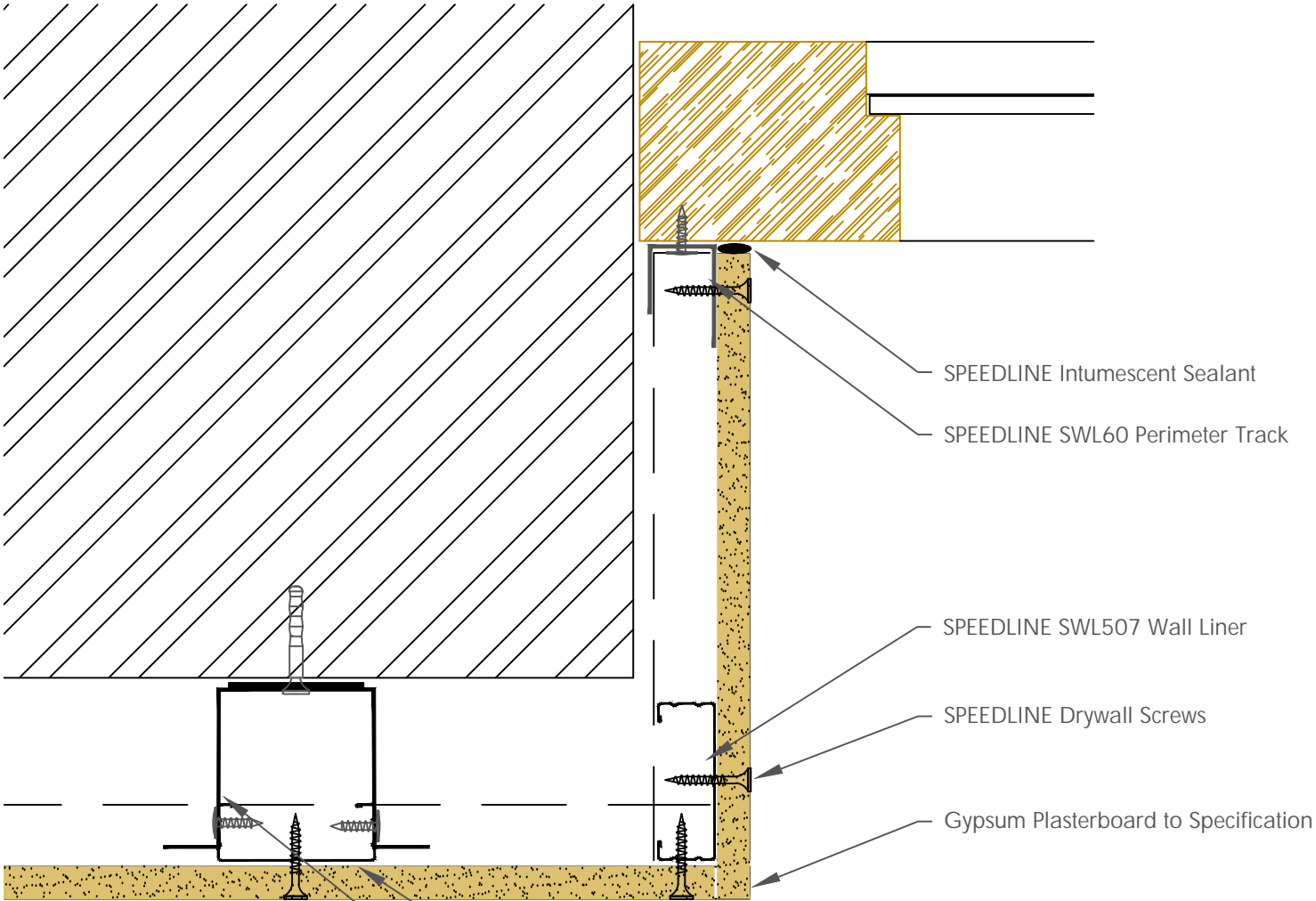
Adsetts House,  
16 Europa View,  
Sheffield Business Park,  
Sheffield,  
S9 1XH.

T: 0114 231 8030

E: enquiries@speedlinedrywall.co.uk



Board Thickness	Speedline Drywall Fixing Length
12.5mm & 15mm	25mm
12.5mm + 12.5mm	25mm + 38mm
12.5mm + 15mm	25mm + 42mm
15mm + 15mm	25mm + 42mm



- SPEEDLINE Intumescent Sealant
- SPEEDLINE SWL60 Perimeter Track
- SPEEDLINE SWL507 Wall Liner
- SPEEDLINE Drywall Screws
- Gypsum Plasterboard to Specification

- SPEEDLINE SWL507 Wall Liner at 600mm centres
- Fixing Brackets at 800mm centres
  - AH185 = 75mm Leg
  - AH186 = 125mm Leg
  - AH175 = 175mm Leg

CDR No: SL 122    SCALE: NTS    DATE: 01/05/18    **Details to be read in conjunction with project specification guidelines**

SWL507 WALL LINING - WINDOW/DOOR REVEAL

All performance data and system specifications are for systems constructed with materials & components as shown. The inclusion or substitution of any other manufacturers materials or components could invalidate test data and system performance and permission must be given in writing by SIG PLC.

The information is provided in good faith and is based upon details received which are assumed to include all relevant facts.

We accept no liability for its accuracy, adequacy or completeness. Recipients must satisfy themselves as to its suitability as we do not accept responsibility for any claims or consequential loss. Acceptance of the content and subsequent design responsibility rests entirely with the recipients who should then produce accepted details on their own company documentation.

Adsetts House,  
16 Europa View,  
Sheffield Business Park,  
Sheffield,  
S9 1XH.

T: 0114 231 8030

E: enquiries@speedlinedrywall.co.uk

